

STUDENT INDUCTION HANDBOOK

THERAPY/IMAGING



CONTENTS

Welcome to Chesterfield Royal Hospital

- Welcome
- Proud to CARE Chesterfield Royal Hospital Values
- Clinical Specialist Services Division information
- Hospital Maps - finding your way around
- Facilities – car park, transport, accommodation etc

Placement information

- Therapy Services
- Day 1 and meeting your educators
- Expectations/code of conduct – social media, confidentiality, dress code, professionalism
- Main contacts
- Learning objectives
- Links to policies and procedures
- Reporting sickness

Guide to Chesterfield – Local area information

- Local amenities
- Where to get help if needed

General information

- You Talk We Listen confidential Service
- A career with CRH

Checklist for induction



Welcome to Chesterfield Royal Hospital!

We're excited to welcome you to our team and we will be doing everything we can to help you settle in during your placement.

Your placement is an amazing opportunity to gain confidence, develop your clinical skills and learn how our beliefs of 'Proud to Care' are put into practice to provide our patients with the best possible care.

We encourage you to make the most of your placement at Chesterfield Royal Hospital – you will meet patients with a variety of conditions and injuries and professionals with years of experience in different areas. By engaging with your educators and the team around you, you meet your objectives whilst having an amazing experience.

In order to get the most out of your placement, you will need to be pro-active – prepare before your placement and whilst you are with us ensure that you are meeting with your educators with your objectives in mind and what you would like to focus on to achieve them.

If you have any worries or questions, please make sure you speak to someone straight away so that help and put things right. Any of the team will be happy to help and remember – it's always best to ask if you're not sure!

We look forward to meeting you!



PROUD TO CARE

At Chesterfield Royal our **Proud to CARE** ethos is at the heart of how we run the hospital – looking after our patients and taking care of our staff:



Compassion

- Compassionate care delivered with professionalism and a positive, friendly attitude
- Care that preserves dignity and respects the person; putting patients at the heart of all we do
- Respecting the unique and individual contribution that each of our staff members make – fair, positive and inclusive, recognising diversity and using it to enrich our organisation

Achievement

- Excellent care, safe services and a positive experience every time
- Exceeding expectations by delivering first-class performance, bettering national standards through innovation and ingenuity

Relationships

- An open and honest relationship with our patients, staff, partners and our communities
Working in partnership in the interests of our patients
- Acting in a socially responsible way and meeting our commitments to the local community.

Environment

- Providing a hospital environment that is modern, clean and safe – conducive to care and recovery; and a good place to work.

For more information visit:

<https://www.chesterfieldroyal.nhs.uk/about/profile/mission-statement>

OUR VISION

What sort of hospital do we want to be?

A first-class district general hospital (DGH) – the model for what a DGH can be in the service of its community – delivering sustainable high quality clinical care, offering an exceptional experience for our patients; and creating a great place for our staff to work.

How will we do this?

We have six objectives to achieve our aim:

For our **patients and our community** we will:

1. Provide high-quality, safe and person-centred care
2. Deliver sustainable, appropriate and high-performing services
3. Build on existing partnerships and create new ones to deliver better care.

For our **hospital and our staff** (inc. trainees and medical students) we will:

4. Provide support and development through high quality training and learning opportunities
5. Manage our money wisely, foster innovation and become more efficient to improve quality of care
6. Provide an infrastructure to support delivery.

We want you to feel well-led, supported, valued and cared for during your training



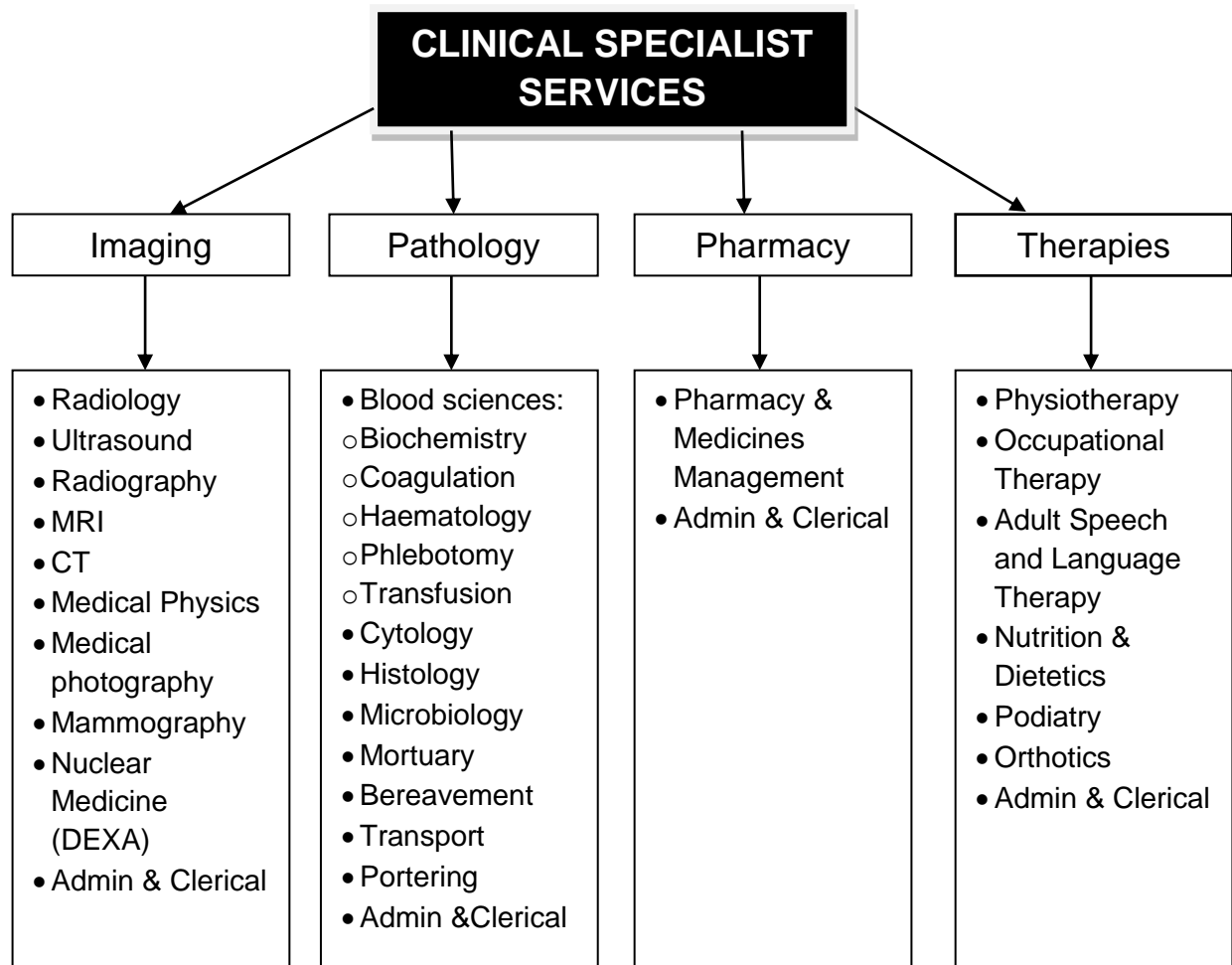
CLINICAL SPECIALIST SERVICES DIVISION

Our Aim

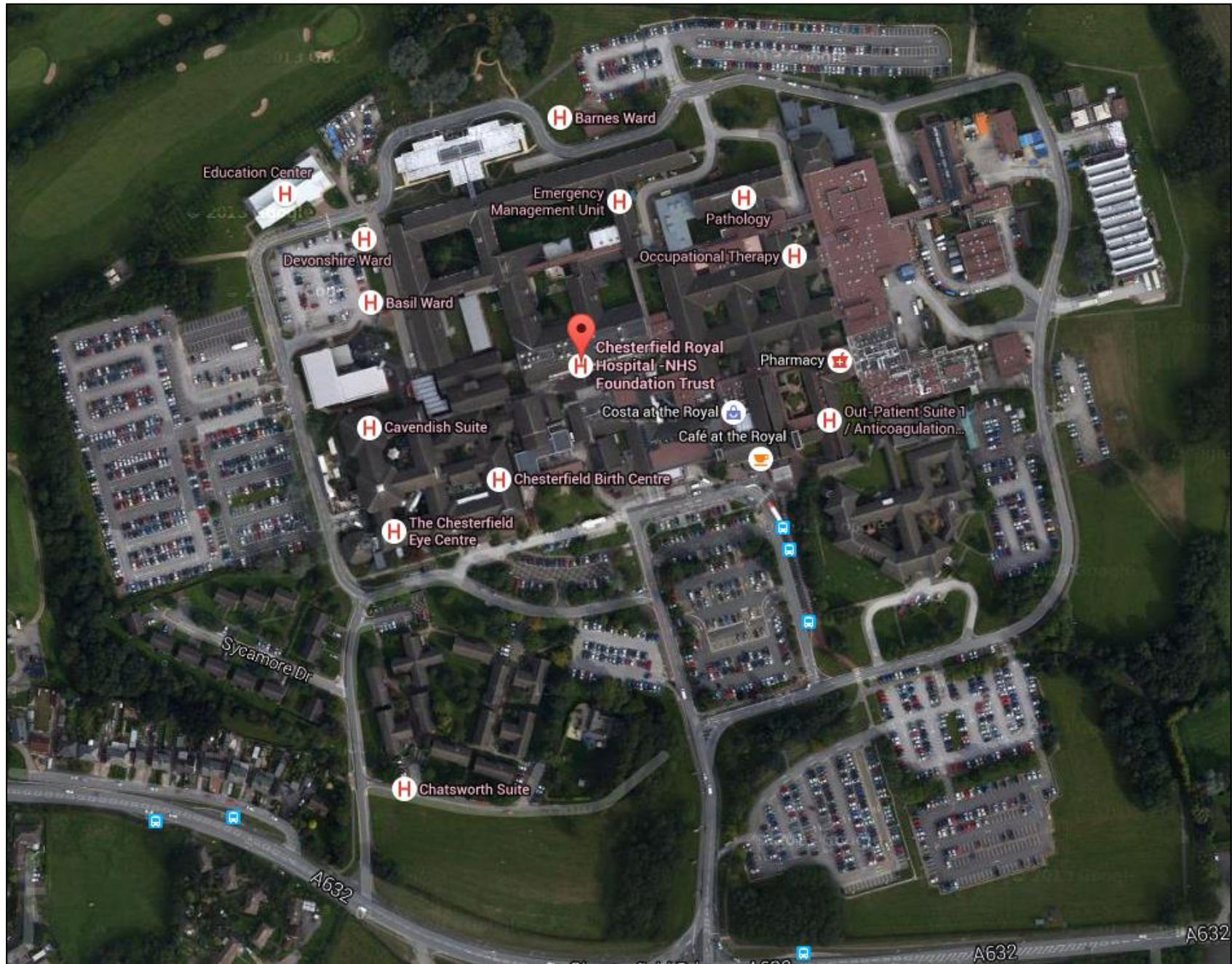
“Our aim is to provide high quality, patient centred specialist services delivered by a motivated, well trained, multi-skilled team, working within the given resources to ensure a sustainable, cost effective service making us the first choice for patients.”

The Clinical Specialist Services division is made up of four departments – Imaging, Pathology, Pharmacy and Therapy Services. Within each of these departments there are a number of different services that you may sometimes hear referred to as ‘modalities’.

Structure



MAP OF CHESTERFIELD ROYAL HOSPITAL



Breast Screening
Emergency Department
Medical Physics
Operating Theatres
Osteoporosis Centre
Pre-Assessment Clinic & Endoscopy Unit

- Dietetics
- Occupational Therapy
- Orthotics
- Physiotherapy
- Podiatry
- Speech & Language Therapy

- Fracture Clinic
- Orthopaedics
- Plaster Suite

- CT Scanning
- Magnetic Resonance Imaging (MRI)
- Ultrasound

Antenatal Clinic
Cavendish Suite
(Chemotherapy & Renal Dialysis)
Chesterfield Birth Centre
Holywell Day Care Ward
Neonatal Unit
Snax@theRoyal

Bereavement Services
Cardio-Respiratory Department
Chapel
Chaplain's Office
Diabetes Education Centre
Hospedia
Medical Illustration
Outpatient Suite 1:
● Adult Audiology
● Anti-coagulation Clinic
● General Surgery
● Pharmacy
● Urology

- Audiology (ENT)
- Community Dentistry
- Ear, Nose & Throat (ENT)
- Maxillofacial Surgery
- Newborn Hearing Clinic
- Othodontics

- MRSA Screening
- Dermatology
- Medical Outpatients

- Pain Management
- Outpatient Suite 7:**
 - Genito - Urinary medicine / Sexual Health

Elizabeth Ward
Hasland Ward
Murphy Ward
Portland Ward
Robinson Ward

The Chesterfield Eye Centre
Children's Hearing Services
Children's Outpatients
The Den (all Children's Services)
Nightingale Ward

Ashover Ward
Durrant Ward
Eastwood Ward
Manvers Ward
Markham Ward
Pearson Ward
Ridgeway Ward
Speedwell Therapy Unit

Margaret Grievie Colposcopy Suite
Trinity Ward
Womens' Health Unit

Anaesthetic Suite
Barnes Ward
Basil Ward
Clinical Decision Unit (CDU)
Devonshire Ward
Elmton Ward
Emergency Management Unit (EMU)
High Dependency Unit (HDU)
Intensive Therapy Unit (ITU)
Medical Engineering
Patient Discharge lounge
Staveley Ward

Outpatient Suite 4:
 ■ Medical Day-Case Unit
 ■ Medical Out-Patients
Outpatient Suite 9:
 ■ Blood Tests
 ■ Pathology

- A** Main Entrance, Reception, Advice Centre, Amigos, Costa Coffee, Security, Flowerbeds@theRoyal, Cafe@theRoyal, Patient Accounts, Ambulance Help Desk & Booked Admissions.
- B** Emergency Dept Entrance
- C** Scarsdale Wing Entrance & Snac@theRoyal
- D** Nightingale Wing Entrance
- E** Visitors' Entrance & Coffee@theRoyal
- F** Hartington Unit Entrance (Derbyshire Mental Health Services NHS Trust)
- G** The Den Entrance

Orange Zone

Margaret Grievie Colposcopy Suite
Trinity Ward
Womens' Health Unit

Car park pay units are at the entrance, visitors entrance and scarsdale entrance.

HOSPITAL FACILITIES/TRANSPORT



Parking

Car parking is available on-site but students can only use the car parks that are open to visitors and **cannot access staff-only car parks**.

All pay and display car parks are 'pay on exit' with barrier controls – collect a ticket from the barrier upon entry and then use one of the yellow pay stations beside the main entrance, visitors entrance or Scarsdale entrance before you go back to your car when you are ready to leave.

Alternatively, you can buy a 14 visit ticket from the [shop@theRoyal](#) in the main entrance. These tickets currently cost £15.00, there is no time limit on its usage and it works in the same way as a cash payment at the paystation – put your parking ticket into the pay machine and then enter the 14 visit pass when you are prompted for payment – the machine will then return your pass, followed by the parking ticket which you can then use at the barrier upon exiting the car park.

For information on current car parking charges visit:

<https://www.chesterfieldroyal.nhs.uk/patients/getting-here/parking>

You can also contact Security on (01246) 513634

See below for a map of the parking facilities.

Transport

The following buses currently stop at Chesterfield Royal Hospital:

78 – Hartington – Staveley – Chesterfield/Royal Hospital
(Stops at Chesterfield Rail Station, but infrequent – 9pprox.. every 2 hours)

80/80A – Wingerworth – Chesterfield – Brimington
(Stops at New Beetwell Street in Chesterfield – 9pprox.. every 30 mins)

82 – Chesterfield – Duckmanton – Bolsover – Hillstown – Langwith/

83 – Chesterfield – New Bolsover – Bolsover – Hillstown
(Both stop at Stephenson Place in Chesterfield – 9pprox.. every 15-20 mins)

84 – Holymoorside – Chesterfield – Royal Hospital
(Stops at New Beetwell Street in Chesterfield – 9pprox.. every 30 mins)

For more information and for **all bus timetables** visit:

http://www.derbybus.info/times/tt_65_120.htm



From Sheffield by train:

The average journey time between Sheffield and Chesterfield is 13 minutes. On an average weekday, the trains generally run 10pprox.. every 5-20 minutes. See

<https://www.thetrainline.com/train-times/sheffield-to-chesterfield>

From Derby by train:

The average journey time between Derby and Chesterfield is 19 minutes. On an average weekday, the trains generally run 10pprox.. every 20 minutes.

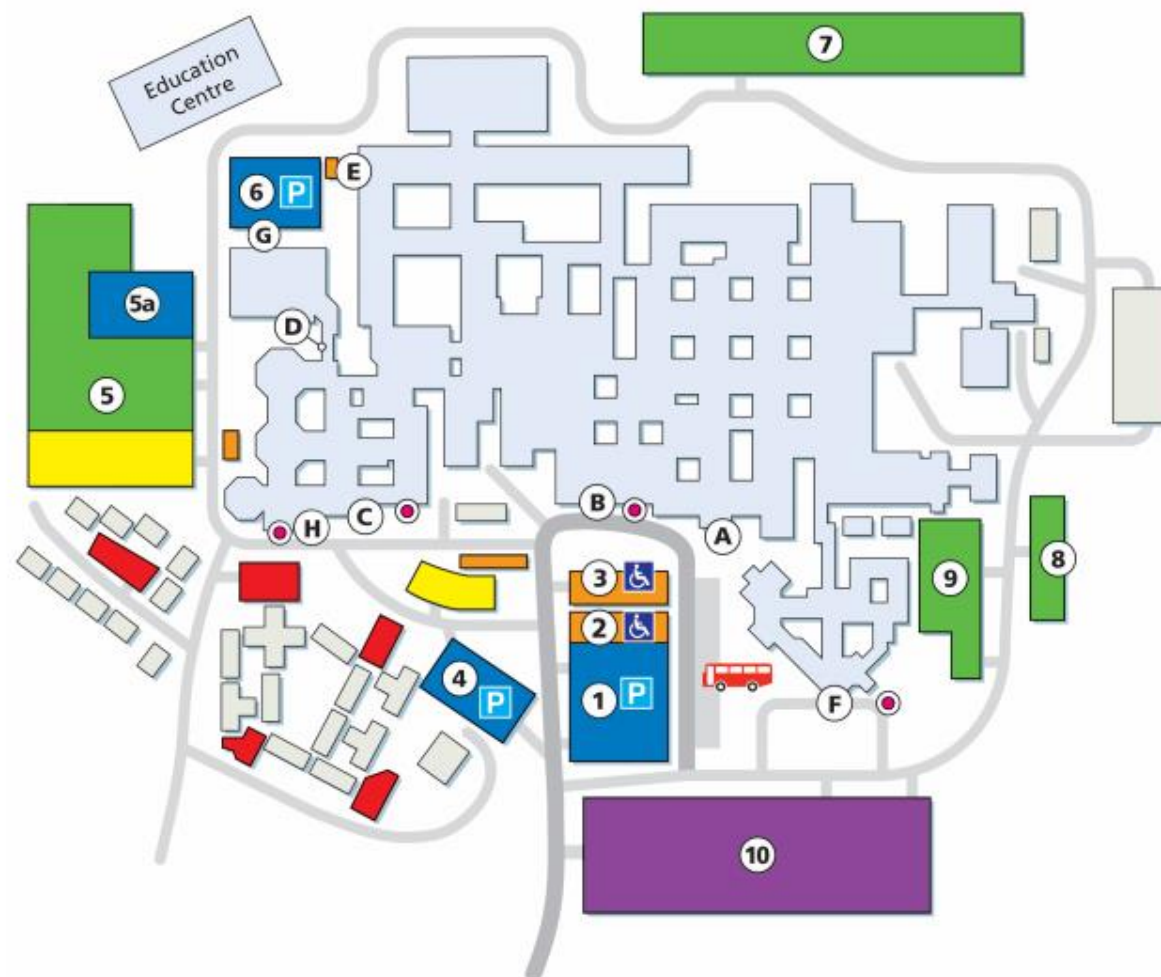
<https://www.thetrainline.com/train-times/derby-to-chesterfield>

From Nottingham by train:

The average journey time between Nottingham and Chesterfield is 36 minutes. On an average weekday, the trains generally run 10pprox.. every 30 minutes.

<https://www.thetrainline.com/train-times/nottingham-to-chesterfield>

CAR PARK MAP



Car Parks

- Car parks for patients and visitors
- Staff and visitors car parks
- Disabled permit holder parking (Free of Charge)
- Drop-off and collection zones
- Staff permit holders
- Staff security car parks
- Staff residential parking only
- 1 10 Numbered car parks

Entrances

- A Main Entrance, Help Desk and Main Outpatient Reception
- B Accident & Emergency Entrance
- C Scarsdale Wing Entrance and Help Desk
- D Nightingale Emergency Entrance
- E Visitor's Entrance / Newsagent and Store
- F Hartington Unit Entrance (Derbyshire Mental Health Services NHS Trust)
- G The Den Entrance
- H Eye Centre Entrance

P Car Parking

Patients and visitors can use Car Parks 1 4 5a 6 & 10. You must pay on exit at one of the yellow pay stations.

£ Financial Help

Patients receiving income support, income-based jobseeker's allowance and pension credit guarantee credits, as well as those with a valid NHS tax credit exemption certificate can claim free parking. You must get your appointment card signed, provide proof of claim to reception and Patient Accounts will refund your ticket.

♿ Disabled Parking

Disabled drivers can use Car Parks 2 and 3 free of charge with a blue badge permit and marked roadway spaces around the hospital. You will be liable to pay a fee if you use any of the other car parks.

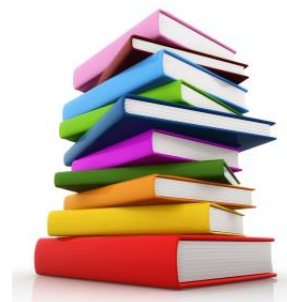
Library

The library is situated on the ground floor of the Education Centre at the Hospital and is open to all students on clinical placements.

To become a member, you will need to bring your University ID card, complete a registration form and agree to abide by the Regulations.

Services include:

- Literature searches – to assist with research (this cannot be used for undergraduate student coursework/assignments, but training is offered on effective literature searching).
- Interlibrary services – books, monographs and journal articles can often be ordered in from other libraries.
- Photocopying/printing – charges are made for copying.
- Training – available to support evidence-based practice.
- Relax @ the Library – there are over 150 fiction and other interest titles to borrow.
- 16 PCs are available to use with desktop applications and internet access within normal Trust regulations.
- Free Wi-Fi is available.



Opening hours:

Mon, Tues, Thur & Fri: 8:30– 5:00pm

Wed (late night): 8:30am – 6:30pm

CLOSED BANK HOLIDAYS & WEEKENDS

Out of hours access (limited, non-staffed service) is available 24 hours a day, 7 days for a week for staff or students who have a Trust swipe card.

For more information, visit <http://www.librarycrhft.co.uk/> or <https://www.youtube.com/watch?v=9rRUdywRMxY>

Catering Facilities



shop@theRoyal

- Fresh sandwiches and rolls as well as fruit and vegetables.
- Milk, cheese, butter and cooked meats, as well as groceries, fresh bread and morning goods.

Opening times:

Mon-Friday 8.00am -8.00pm

Saturday 9.00am- 6.00 pm

Sunday 9.00am- 6.00pm

café@theRoyal

- Our Pastry Chef, who specialises in pie making, bakes a fresh batch of pies every single day of the year providing an unbelievable range of choice.
- Hot meals, low fat meals and vegetarian and vegan meals. We are also in the process of adding new dishes that will allow lactose intolerant dinners to enjoy our friendly environment and great food.

Opening times:

Monday – Sunday 8am – 8pm



in partnership with **WRVS**

- Snax@theroyal is a small café situated in the Scarsdale entrance ion between the Chesterfield Birth Centre and Antenatal clinics.
- A mixture of drinks including instant coffee or a bean to cup.
- Breakfast baps are served throughout the day as well as hot and cold sandwiches and jacket potatoes with various fillings.

Opening Times:

Monday –Friday 8am-4pm



- Located in the visitors' entrance, it is a small trust run coffee outlet that serves a mixture of hot and cold drinks and sandwiches, sweets and savoury snacks.

Opening Times:

Monday-Friday 8am-4pm

PLACEMENT INFORMATION

THERAPY SERVICES

Physiotherapy

Chesterfield Royal Hospital's Physiotherapy service provides a range of in and outpatient services to the Trust, for adults and children.



The aim of physiotherapy following an individual assessment is to maintain or restore optimal function to patients, enabling them to lead as high a quality of life as possible.

The majority of the out-patient work, for GP and Consultant referred patients, is for patients who have musculoskeletal,

respiratory, neurological, rheumatological or Women's Health conditions.

All physiotherapists are [Health & Care Professions Council \(HPCP\)](#) and [Chartered Society of Physiotherapy](#) registered.

Occupational Therapy

Occupational Therapy focuses on rehabilitation through function that is task-based, e.g. facilitating a person's discharge from hospital by assessing a patient's ability to manage activities of daily living.

There is also an outpatient service for Consultant and GP referred patients who have problems with using their upper limb, usually hand function.

Staff undertake specialist training to provide the most up to date





evidence based treatment in, for example, post-operative hand surgery and simulated work based assessments. Splints and braces can be provided to aid function if appropriate.

All Occupational Therapists are [HCPC](#) and [British Association of Occupational Therapists](#) registered.



DAY 1 AND MEETING YOUR EDUCATOR



Concerned about something that's happening in our hospital?

- Worried it's affecting the quality of our patient care?
- Anxious about our services or your colleagues?
- Not sure what to do or who to tell?

The You Talk – We Listen service is a **free and confidential hotline** that allows any of our people to report concerns quickly and without fear of recrimination.

Remain anonymous or provide your details – it's up to you.

Telephone: 0800 389 9973

Prefer to e-mail? Send your concerns to crhft.YouTalkWeListen@nhs.net

If you do not want your name to be revealed just say so in the e-mail.

ABOUT CHESTERFIELD

Chesterfield is a market town nestled in the heart of Derbyshire, it has a population of over 100,000 and is close to the cities of Sheffield, Derby and Nottingham. It has great road and rail networks and is within one hour of East Midlands airport.

Famous for its Crooked Spire, St Mary's and All Saints, Chesterfield and the surrounding area have a lot to offer. Chesterfield is an historic town with modern high street stores, many places to eat, drink.

The Peak District National Park is 10 minutes away, and Chatsworth House, Hardwick Hall, Bolsover Castle, and Haddon Hall are all close by.



WHERE IS THE NEAREST (to Chesterfield Royal Hospital)?

A

B

Bank – the Co-operative Bank, Chesterfield, 15 Elder Way, Chesterfield, Derbyshire, S40 1UX, tel. 01246 204944

Opening Hours

Normal

Mon 09:30 - 17:00

Tue 09:30 - 17:00

Wed 09:30 - 17:00

Thu 9:30 - 17:00

Fri 09:30 - 17:00

Sat 09:30 - 13:00

Sun Closed

(depends what bank you're with, town centre has most MAIN banks)

Bus Stop – Chesterfield Royal Hospital, Main Entrance



Bus station – Chesterfield Coach Station, Stephenson Pl, Chesterfield, S40 1XL, tel. 01246 232812

C

Cash Machine – Chesterfield Royal Hospital, Main Entrance

Church – Top Road, Chesterfield, Derbyshire, S44 5AF, tel. 01246462192 Christianity open 100.00am – 3.30pm, Mondays, Wednesdays, Saturdays & Sundays

Cinema - ALMA LEISURE PARK, 1 Derby Rd, Chesterfield S40 2ED, tel. 0871 200 2000

City – Sheffield, South Yorkshire

Coffee shop – Costa, Chesterfield Royal Hospital, Main Entrance or 34 Mansfield Rd, Hasland, Chesterfield S41 0JA, tel. 01246 554024

D

Dentist Surgery - Jawbones Hill, Chesterfield S40 2EN, tel.01246 277375

Doctor Surgery – Surgery @ Wheatbridge, 30 Wheatbridge Rd, Chesterfield S40 2AB, tel. 01246 277287

E

F

Florist - Chesterfield Royal Hospital, Main Entrance or Hasland Fruit & Flowers, 22 Mansfield Rd, Hasland, Chesterfield S41 0JA, tel. 070 9330 2128

Flea market - Thursday all year round, 9 am-4 pm.

Rummage among the stalls to find yourself a bargain. You never know what might be on sale second hand – a piece of Pearson’s Pottery, Goss crested china, vintage jewellery and clothes, and a range of collectables.



Farmers' Market - Second Thursday of every month, Central Pavement, 9am-4pm
A variety of local producers come to the farmers' market in Chesterfield. The market is held on Central Pavement next to the Market Place. A changing range of stalls include organic vegetables, rare breed meat, freshly caught fish, Derbyshire honey, homemade cakes, homemade Italian sauces and cheese.

G

General Market – High Street, Chesterfield Town Centre, Mondays, Fridays and Saturdays, 9.00am – 4.00pm

H

Health Club – Nuffield Health Chesterfield Fitness & Wellbeing - Alma Leisure Park, Derby Road, Chesterfield, S40 2EZ, tel. 01246272226,

Hospital - Chesterfield Royal Hospital

I

Internet Café - 8 Stephenson Place, Chesterfield, Chesterfield S40 1XL, tel. 0 1246 274455

J

K

L

Library - Chesterfield Royal Hospital, Education Centre, tel. 01246 513619 or Library, 4New Beetwell Street, Chesterfield, Derbyshire, S40 1QN, Tel: 01629 533 400 , Fax: 01246 209304 , Text: 07792697826
email: chesterfield.library@derbyshire.gov.uk

M



N

Night club - 21-23 Holywell Street, Chesterfield, S41 7SA

Opening Times: Wed: 10:00pm - 3:00am, Thu - Sat : 10:00pm - 6:00am

O

P

Park - Queen's Park Sports Centre, Boythorpe Road, Chesterfield, S40 2ND,

Opening hours: Mon-Fri: 6:30am-10pm, Sat-Sun: 8am-8pm

Post box: Chesterfield Royal Hospital, Main Entrance

Post office: Calow, Chesterfield, S44 5BJ, tel. 01246232184

Pub: The White Hart, Top Road, Calow, Derbyshire, S44 5TE, tel. 01246 555449

R

Retail park: Ravenside Retail Park, tel. 01132615353

Restaurant: The White Hart, Top Road, Calow, Derbyshire, S44 5TE, tel. 01246 555449

Railway station: 1 Corporation St., Chesterfield, S41 7UB(08457484950)

S

Shop: Chesterfield Royal Hospital, Main Entrance

Monday – Friday: 8.00am – 8.00pm

Saturday: 9.00am – 6.00pm

Sunday: 9.00am – 6.00pm



Supermarket: Asda Chesterfield Supermarket, 358 Sheffield Road, Chesterfield, S41 8JZ,
Tel: 01246 342200

T

Tourist Information Centre: Rykneld Square, Chesterfield, Derbyshire, S40 1SB,
tel. 01246 345777/8

Taxi rank – free phone to book certain taxis inside CRH, Main Entrance

Club Taxi: 01246 222222

Central Cars: 01246 200500

U

V

WiFi spot – Library, Education Centre, CRH



Come and join us at café@theRoyal where exceptional food meets great value.

Our dedicated team of highly qualified staff range from all areas of the food industry. Our Pastry Chef, who specialises in pie making, bakes a fresh batch of pies every single day of the year providing an unbelievable range of choice.

Our Executive Chef, who deals with large quantity cuisine and buffet selections (see [hospitality@theRoyal](#) for a menu and order form), is always on hand to make your favourite dishes from the freshest ingredients whenever you require them.

All our other staff are trained to the necessary standards to provide you with a complete dining experience.

Our extensive menu currently caters for many dietary requirements, including hot meals, low fat meals and vegetarian and vegan meals. We are also in the process of adding new dishes that will allow lactose intolerant diners to enjoy our friendly environment and great food.

All the food prepared in our kitchens is made fresh, using only the finest ingredients and is sourced locally to help support our community and the environment. For example, Owen Taylor of Alfreton supplies our meat and poultry, G.W.P of Eckington supply our fruit & vegetables and Holsworth Tideswell facility supplies any frozen ingredients we need.

Opening Times:

Relax@theRoyal 8 am - 8 pm Monday to Sunday

Coffee@theRoyal 8 am - 4 pm Monday to Friday

Snax@theRoyal 8 am - 4 pm Monday to Friday

NB. All NHS staff and affiliated members receive 20% discount at café@TheRoyal and 10% discount at Costa Coffee

Costa at the Royal provides an alternative for staff and visitors who value high quality coffee or just fancy a treat. By purchasing the rights to use brand, the Trust is able to offer a combination of high quality Costa Coffee along with mixture of sandwiches and snacks, produced by our own Café @ the Royal, ensuring best value for money is valuable.

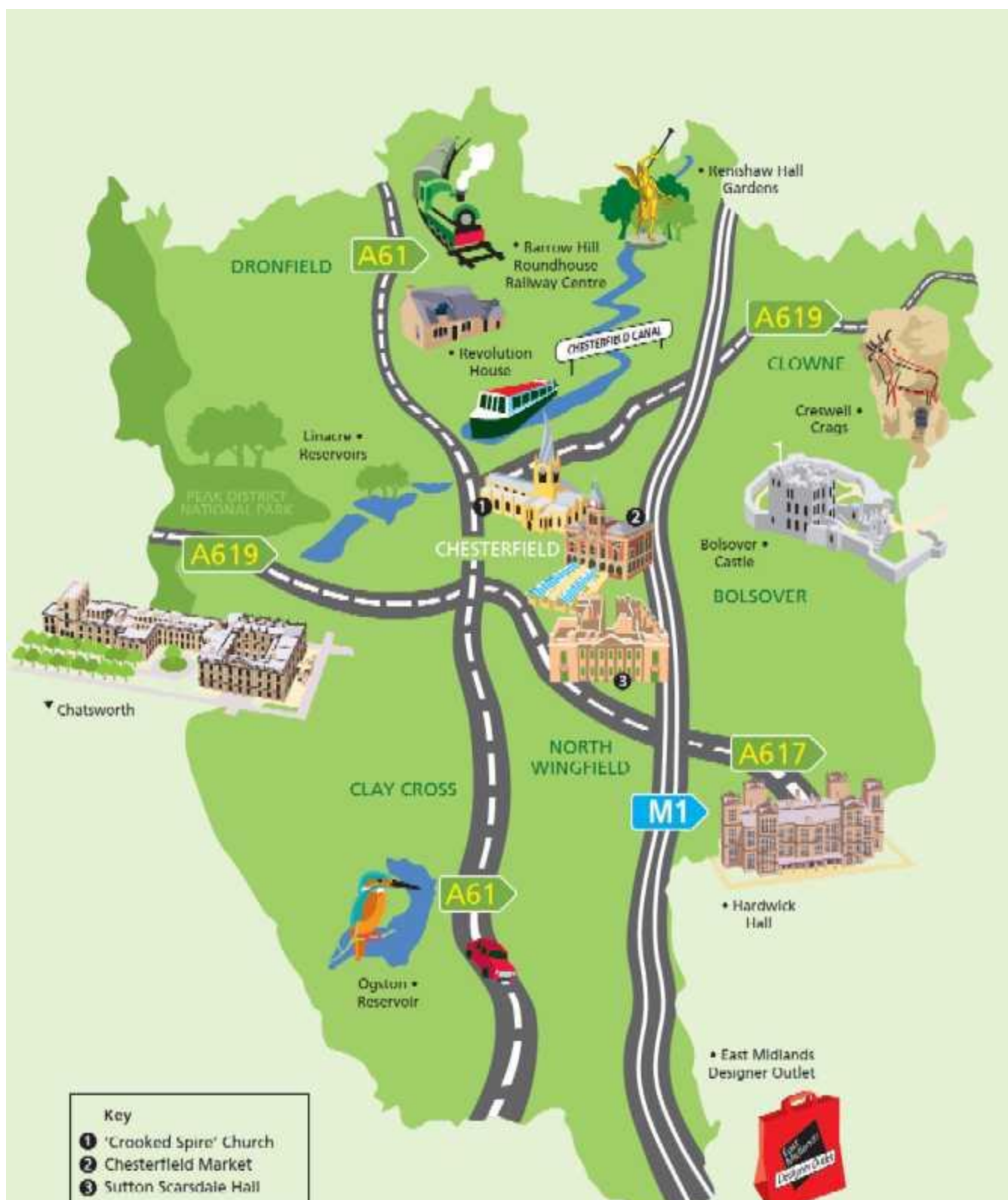


By delivering the service this way, our starting prices are a 10% reduction on the High Street. We then give a further 10% discount at the till to staff, students and public members

of Chesterfield Royal. Costa @ the Royal is another core part of our aim to offer quality choices at value for money prices for our staff and visitors.

LOCAL AREA INFORMATION

Chesterfield and Derbyshire attractions





Sightseeing in Chesterfield Area

<http://www.visitchesterfield.info/attractions.aspx>

Chesterfield Museum and Art Gallery Museum

<http://www.visitchesterfield.info/thedms.aspx?dms=3&venue=6026933&w=100%25>

Revolution House

<http://www.visitchesterfield.info/thedms.aspx?dms=3&venue=6022434&w=100%25>

Barrow Hill Roundhouse Railway Centre Museum - Transport

<http://www.visitchesterfield.info/thedms.aspx?dms=3&venue=6028715&w=100%25>

Creswell Crags Cave Cavern Attraction

<http://www.visitchesterfield.info/thedms.aspx?dms=3&venue=6020773&w=100%25>

Poolsbrook Country Park Country Park

<http://www.visitchesterfield.info/thedms.aspx?dms=3&venue=6050957&w=100%25>

Peter Fidler Nature Reserve Nature Reserve

<http://www.visitchesterfield.info/thedms.aspx?dms=3&venue=6052300&w=100%25>

Linacre Reservoirs

<http://www.visitchesterfield.info/thedms.aspx?dms=3&venue=6027989&w=100%25>

John Varley Narrowboat at Chesterfield Canal Boat Trips

<http://www.visitchesterfield.info/thedms.aspx?dms=3&venue=6022060&w=100%25>

Ashover Village

<http://www.visitchesterfield.info/thedms.aspx?dms=3&venue=6050100&w=100%25>

Barlow Village

<http://www.visitchesterfield.info/thedms.aspx?dms=3&venue=6050231&w=100%25>

Holymoorside Village

<http://www.visitchesterfield.info/thedms.aspx?dms=3&venue=6050308&w=100%25>



Old Brampton Village

<http://www.visitchesterfield.info/thedms.aspx?dms=3&venue=6050462&w=100%25>

Chatsworth Historic House

<http://www.visitchesterfield.info/Chatsworth/details/?dms=3&venue=6024183&feature=3>

Hardwick Hall at Hardwick Estate - Historic House

<http://www.visitchesterfield.info/Hardwick-Estate/details/?dms=3&venue=6012150>

Renishaw Hall and Gardens Garden Dronfield

<http://www.visitchesterfield.info/Renishaw-Hall-and-Gardens/details/?dms=3&venue=6027956>

Bolsover Castle

<http://www.visitchesterfield.info/Bolsover-Castle/details/?dms=3&venue=6020509>

Whaley Bridge Well Dressing at Whaley Bridge

<http://www.visitchesterfield.info/thedms.aspx?dms=3&venue=6060659&feature=1001>

Chesterfield Area Walking

<http://www.visitchesterfield.info/Walking.aspx>

Chesterfield Area Cycling

<http://www.visitchesterfield.info/Cycling.aspx>

Restaurants in Chesterfield & Places to Eat in Chesterfield

<http://www.visitchesterfield.info/eatingOut.aspx>

Chesterfield Theatres: The Pomegranate Theatre & The Winding Wheel

<http://www.visitchesterfield.info/Theatres.aspx>

Chesterfield Flea Market at Chesterfield Market

<http://www.visitchesterfield.info/Chesterfield-Market/details/?dms=3&venue=6050253>

